



INDEX

SL NO	SUBJECT	PAGES
1.	Index	1
2.	Factory Profile	2
3.	Factory Facilities	3
4.	Company Philosophy	4
5.	Our Commitments	5
6.	Our Aim for Production Activities	7
7.	Our Manpower	8
8.	Production Flow Chart	9
9.	Our Quality Control System	11
10.	QCD Organization Structure	13
11.	QAD Organization Structure	14
12.	General Information at a Glance	15
13.	List of Machineries	19
14.	Fire Warning System	21
15.	Fire Safety	24
16.	Fire Extinguisher	26
17.	Fire Fighting Equipment	28
18.	Medical Facilities	29
19.	Facilities	31
20.	Conclusion	32



FACTORY PROFILE

Factory Name : **EVE DRESS-SHIRTS' LIMITED**

Address : 219, Anowar Jung Road, Ward # 05, Block # A,
Asulia, Savar, Dhaka-1341, Bangladesh

Contact Persons

ADM NURUL MOWLA Position : Managing Director

MD. IFTEKHAR MATIN Position : Director

Main Products

NURUL ABRAR Position : Director

Men's : Casual Shirt, Work Wear & Formal Shirt.

Women's : Shirts & Blouses.

Children's : Shirts & School Wears.





FACTORY FACILITIES

Work flow system	:	Line system
No of Sewing Lines	:	12
Floor-In-Charge	:	02
No of Line Chief / Line	:	01
No of Supervisors / Line	:	03
No of Quality Controller / Line	:	01
No of QC Inspectors / Line	:	08
Final inspection system	:	Self and buyers representative.
A.Q.L Level	:	2.5 (Internal Audit AQL 1.5)
Number of Sewing Machines	:	590
Number of Other Aux Machine	:	110

Sewing Equipment :

Single Needle	:	405	Over-lock	:	50
Over-lock Edge Cutter	:	18	Double Needle (Lock Stitch):	:	15
Double Needle (Chain Stitch):	:	15	Three Needle Chain Stitch	:	06
Button Hole	:	31	Button Attach	:	31
Kansai Special	:	12	Feed of the Arm	:	17
Bar Tacking	:	02			

Other Special Equipments:

Front placket fusing, pocket creasing, sleeve placket pressing, cuff forming and pressing, collar turning & pressing, feed of the arm machine, auto thread cutter and trimmer machines, plain machines with roller.

In-Line Vacuum Pressing Iron	:	06 (Six) per line
Vacuum Ironing Tables (Finishing)	:	31 (Thirty One)
Pneumatic Folding Table	:	12 (Twelve)
Folding Table	:	19 (Nineteen)
Hanging Garment Area	:	Sufficient



COMPANY PHILOSOPHY

Eve Dress-Shirts' Ltd. is in a believe of constant growth through proper-vision, training, adaptation of up-to-date technology & close teamwork. It believes in flexibility and always ready to re-adjust her policy according to customer / market.

1. Our Value Statement : These are the standards that inform and inspire all of our activities, and distinguish us as a Group.

2. Ethics : We will be well-informed in the rules, regulations and compliance issues that apply to our businesses around the world. We will apply this knowledge to our conduct as responsible employees of Eve Group, and will adhere to the highest standards of ethical conduct in all that we do.

3. Excellence : The pursuit of superior performance infuses every Eve Dress-Shirts' Ltd activity. We excel at meeting challenging commitments even as we achieve total customer satisfaction. We demonstrate leadership by advancing new technologies, innovative manufacturing techniques, enhanced customer service, inspired management, and the application of best practices throughout our organization. Each of us leads through our individual contributions to Eve Dress-Shirts' Ltd's core purpose.

4. "Can-Do" : We demonstrate individual leadership through a positive approach to every task, a "can-do" spirit, and a restless determination to continually improve upon our personal bests. We aggressively pursue new business, determined to add value for our customers with ingenuity, determination and a positive attitude. We utilize our ability to combine strength with speed in responding enthusiastically to every new opportunity and every new challenge.

5. Integrity : Each of us brings to the workplace personal values which guide us to meet our commitments to customers, suppliers, colleagues and others with whom we interact. We embrace truthfulness, trust and we treat everyone with dignity and respect- as we wish to be treated ourselves.

6. People : Outstanding people makes Eve Dress-Shirts' Ltd a unique. Success in rapidly changing markets requires that we continuously learn and grow as individuals and as an organization. We embrace life-long learning through individual initiative, combined with company-sponsored education and development programs, as well as challenging work and growth opportunities.

7. Teamwork : We multiply the creativity, talents and contributions of both individuals and businesses by focusing on team goals. Our teams assume collective accountability for their actions, share trust, leadership, embrace diversity, and accept responsibility for prudent risk-taking. Each of us succeeds individually ... when we as a team achieve success.



OUR COMMITMENTS

Legal Requirements :

Ensuring of all laws and regulation with its implication.

Child Labor :

Not to employ or use any child labor.

Forced Labor :

There will not be any use of prison labor, bonded labor, indentured labor and forced labor in the Eve Dress-Shirts' Ltd. Forced labor is defined as any work or service, which is extracted from any person under the threat of penalty for its non-performance and for which the Work Force will not offer him/her voluntarily.

Freedom of Association :

Where national law does not prohibit the freedom of association and right to collective bargaining, Eve Dress-Shirts' Ltd recognizes the right of all Work Forces to form Work Forces' Welfare Committee and to comply with any other local laws relating to this right.

Harassment & Abuse :

Eve Dress-Shirts' Ltd is determined to prevent harassment and abuse at any time. Management takes severe disciplinary actions against the defaulters and instigators, if anyone uses corporal punishment, threat of violence or other forms of physical, sexual, psychological or verbal harassment or abuse. Each employee is treated with dignity and respect.

Non Discrimination :

Eve Dress-Shirts' Ltd is committed to a policy of providing equal opportunities in recruiting and selecting applicants for employment, in advancing our personnel as suitable openings develop and in any matter affecting their employment here. Eve Dress-Shirts' Ltd will provide equal opportunities in recruitment, benefits, promotion, termination, dismissal, retirement without regard to age, gender, race, color, religion, national origin, rich/poor, relative/non-relative, social position, political believe, superior/inferior, marital status, handicap, or status as a veteran or a freedom fighter.

Health & Safety :

To provide employees with safe and healthy work place in compliance with all applicable laws and Regulation, ensuring at a minimum reasonable access to potable water and sanitary facilities, fire safety and adequate lighting and ventilation.

Compensation :

To recognize that wages are essential to meet employees basis needs, Eve Dress-Shirts' Ltd will at minimum comply with all applicable wages and working hours law and regulation including those relation to minimum wages, over time, maximum hours and other elements of compensation and provide legally mandatory benefits, except in extra ordinary business



circumstance. Eve Group will not require employees to work more than 48 hours per week & 12 Hours over time per week.

Protection of Environment :

To comply with all applicable environmental laws and regulations.

Wages and Benefits :

Salary and allowances of all the Work Force of Eve Dress-Shirts' Ltd are paid in cash by 7th day of each month. Pay Slips in Bengali mentioning details of salary breakdown are handed over to every Work Force before payment. We strictly follows the Gazette Notification of Bangladesh Government regarding the salary structure of the work forces.

Hours of Work :

We strictly follow the labor law working hours.

Ethical Standards :

Eve Dress-Shirts' Ltd will seek to identify and work with business partners who aspire as individuals and in the conduct of their business to a set to ethical standards, which are computable with buyers standard. Bribes, kickbacks or other similar unlawful or improper payments are strictly prohibited to be given to any person or entity to obtain or retain business.



OUR AIM FOR PRODUCTION ACTIVITIES

- Our Aim** :
- a. A standard excellence in every aspect of business.
 - b. Ethical & responsible conduct in all operation.
 - c. Respects for rights of all individual.
 - d. Respect for the environments.
 - e. Participation in all social activities.
- Daily Output** : 12 lines X 1,000 pcs = 12,000 pcs of shirts (10 hours).
- Monthly Output** : 12,000 pcs X 25 days = 3,00,000 pcs of shirts per month.



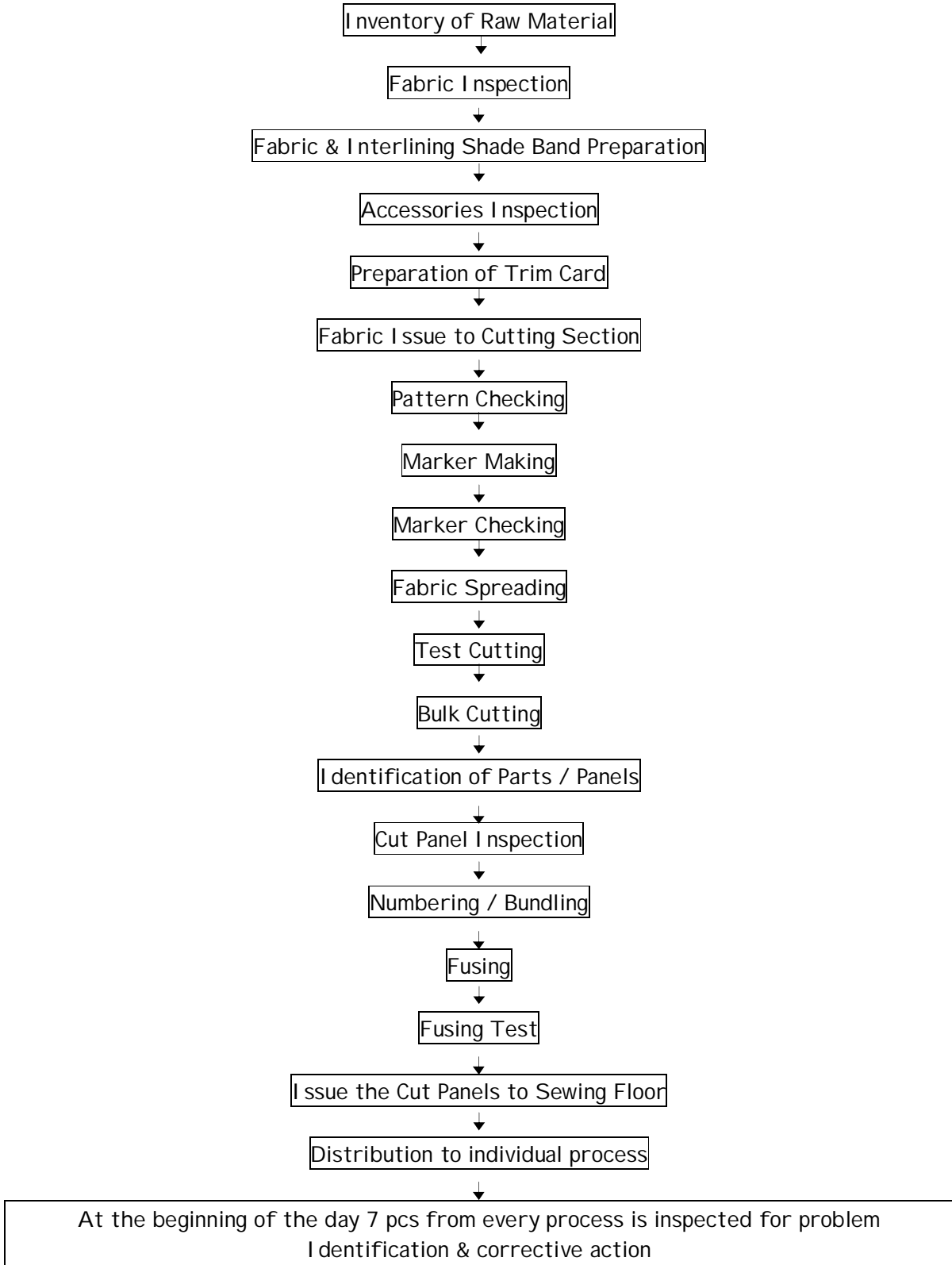


OUR MANPOWER

SL NO	DEPARTMENT	MANPOWER
1	Marketing & Merchandising Department	7
2	Product Engineering & Planning Department	33
3	Commercial Department	2
4	Cutting Section	86
5	Fusing Section	46
6	Making Section	175
7	Sewing Section	715
8	Finishing Section	213
9	Quality Assurance Department	174
10	Quality Audit Department	9
11	Maintenance & Utility Department	21
12	Material Management Department	26
13	Finance & Accounts Department	2
14	HR & Admin Department	100
15	MDs' Secretariat	1
16	Laboratory Department	1
17	Embroidery Department	16
TOTAL		: 1627



PRODUCTION FLOW CHART







OUR QUALITY CONTROL

QUALITY CONTROL POLICY

The aim of Eve Dress-Shirts' Ltd is to produce the garments as per the customer's specifications and standard. The quality control team assures the effective levels of control at each level so that the customer's specifications and standards are achieved.

Quality control team works directly under the management and closely monitors the quality of the factory production. In case of any quality problem, the team reports to the concerned and corrective action are taken accordingly.

QUALITY CONTROL SYSTEM

Eve Dress-Shirts' Ltd follows a quality control system from the piece goods inspection to final statistical audit.

a. Piece goods quality control : On receipt of piece goods in the ware house at least 10% is inspected as per " Four points " system as under.

<u>Size of Defect</u>	<u>Penalty</u>
3 Inches or less	1 Point
Over 3, Under 6 Inches	2 Points
Over 6, Under 9 Inches	3 Points
Over 9 Inches	4 Points

A Maximum of four points is charged to one linear yard. Only passed piece goods are issued to the cutting floor.

b. Cutting quality control : In cutting section quality control is ensured in two stages.

- (1) Spreading quality control : Following points are checked during spreading
 - Table Marking
 - Ends
 - Tension
 - Leaning
 - Narrow Goods
 - Counts
 - Ply Height
 - Remnants
 - Fabric Flaws
 - Marker Placing



- (2) After Cutting quality control : After each cutting seven blocks and bundles are selected at random checked based on acceptable quality level (AQL) 2.5 on the following points.

Mis Cut
 Ragged cutting
 Pattern checks
 Matching plies
 Notches

c. **In process quality control (Sewing)** : During sewing " In process quality control " is done by selecting seven pieces at random from a completed bundle (Maximum 180pcs) after checking bundle will be passed for zero defect based on AQL 2.5 in case one or more defects are found in seven pcs whole bundle will be sent to concerned supervisor for recheck.

d. **Quality control in Finishing Section** : Following Inspection / Audit are done to attain AQL 2.5

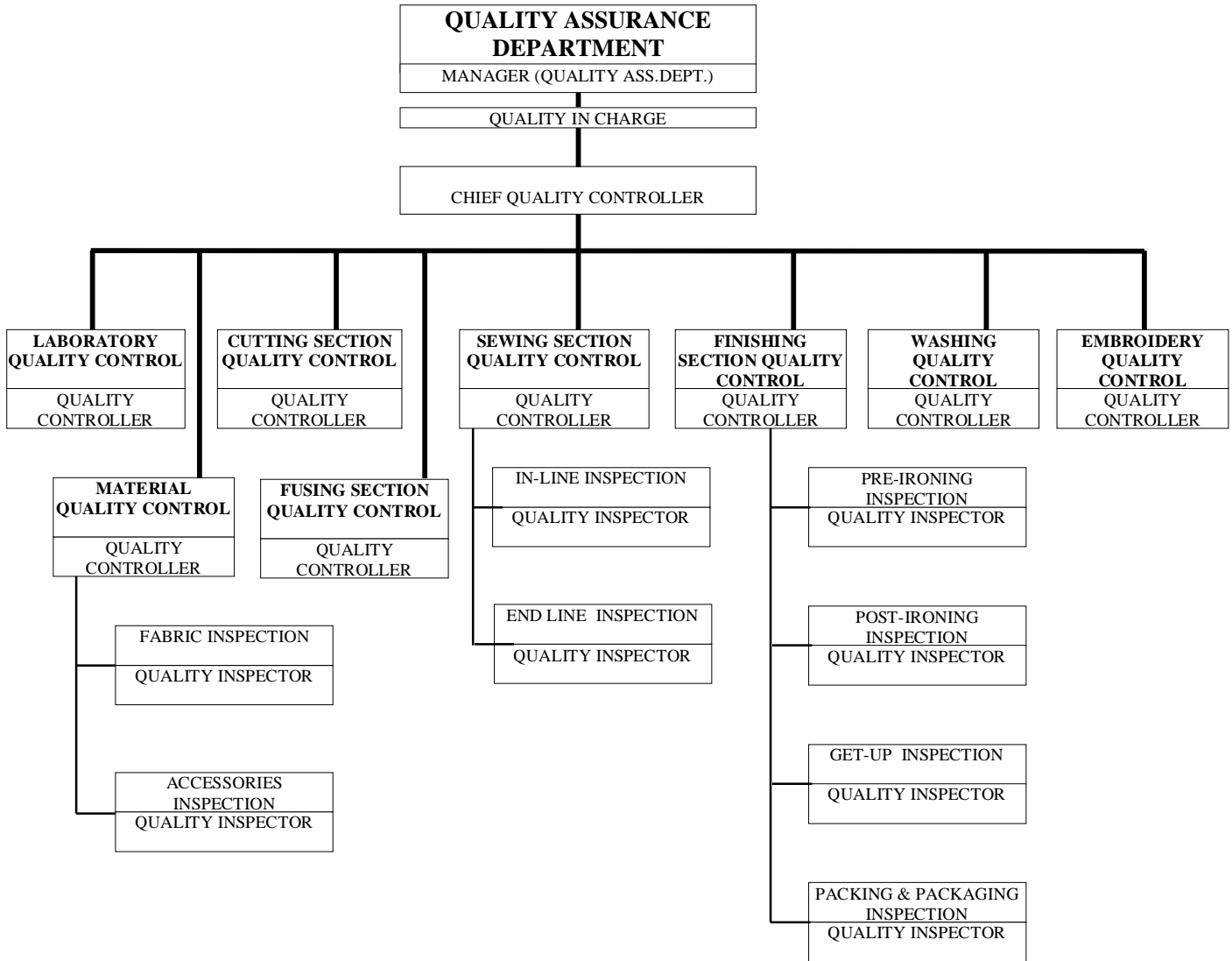
- (1) Process Inspection : Garments are checked process wise at the initial stage of Finishing.
- (2) Two-Hourly Audit : Every after Two-Hours statistical audit is done on Finishing lot to attain AQL 1.5
- (3) Days Final Audit : At the end of the day accumulated lot of Finished Garments are statistically audited to attain AQL 1.5.

Before offering Final Inspection by Buyer, our Quality Audit Department conducts statistical audit (Pre-final Inspection) based on AQL 2.5. This way Garments can easily be passed during Buyers Inspection based on AQL 2.5.





QCD ORGANISATION STRUCTURE





QAD ORGANISATION STRUCTURE





GENERAL INFORMATION AT A GLANCE

1. Floor Space		
Ground floor Area	:	19,000 Sft
First floor	:	19,000 Sft
2 nd Floor	:	19,000 Sft
3 rd Floor	:	19,000 Sft
4 th Floor	:	19,000 Sft
5 th Floor	:	19,000 Sft
Generator Area	:	1,406 Sft
Boiler	:	130 Sft
Child Care	:	290 Sft
Compressor Room	:	76 Sft
Wastage	:	750 Sft
Total Area	:	1,16,652 Sft
2. Dining Hall & Canteen	:	6,500 Sft
3. Medical Inspection Room	:	01 (One)
4. Child Care Room	:	01 (One)
5. Dining Hall	:	02 (Two)
6. No of Toilets		
a. Ground Floor		
Male	:	07 Nos
Female	:	09 Nos
Common	:	08 Nos
b. First Floor		
Male	:	08 Nos
Female	:	16 Nos
Common	:	02 Nos
c. 2nd Floor		
Male	:	08 Nos
Female	:	16 Nos
Common	:	02 Nos
d. 3rd Floor		
Male	:	05 Nos
Female	:	03 Nos
Common	:	02 Nos



E. 4th Floor			
Male	:		08 Nos
Female	:		16 Nos
Common	:		02 Nos
F. 5th Floor			
Male	:		05 Nos
Female	:		03 Nos
G. 6th Floor			
Male	:		03 Nos
Female	:		02 Nos
Common	:		04 Nos
Total	:		129 No



6. Basins / Washing Bay

a. Ground Floor	:		29 Nos
b. First Floor	:		22 Nos
c. 2nd Floor	:		22 Nos
d. 3rd Floor	:		12 Nos
e. 4th Floor	:		22 Nos
f. 5th Floor (including Dining & Canteen)	:		37 Nos
g. 6th Floor	:		15 Nos
Total	:		188 Nos





7. Drinking Water Station

a. Ground Floor	:	03 Nos
b. First Floor	:	04 Nos
c. 2nd Floor	:	04 Nos
d. 3rd Floor	:	02 Nos
e. 4th Floor	:	04 Nos
f. 5th Floor (including Dining & Canteen)	:	29 Nos
Total	:	46 Nos



8. Suggestion Box

a. Ground Floor	:	02 Nos
b. First Floor	:	02 Nos
c. 2nd Floor	:	02 Nos
d. 3rd Floor	:	02 Nos
e. 4th Floor	:	02 Nos
f. 5th Floor (including Dining & Canteen)	:	02 Nos
Total	:	12 Nos





9. CCTV		
	Total	: 24 Nos
10. PA System		
a. Ground Floor		: 02 Nos
b. First Floor		: 09 Nos
c. 2nd Floor		: 06 Nos
d. 3rd Floor		: 03 Nos
e. 4th Floor		: 05 Nos
f. 5th Floor		: 05 Nos
h. 6th Floor		: 01 Nos
i. Generator		: 01 Nos
	Total	: 32 Nos



LIST OF MACHINERIES

SL NO	TYPE OF MACHINE	NAME OF THE MANUFACTURER	MODEL	SL NO	Qty
1	1-NEEDLE LOCKSTITCH MACHINE	JUKI	DDL-8300N	23127	162
2	1-NEEDLE LOCKSTITCH MACHINE WITH AUTOMATIC THREAD TRIMMER	JUKI	DDL-8700A-7 WB DDL-8100-B17WBK	13511	207
3	1-NEEDLE, NEEDLE FEED LOCKSTITCH MACHINE	JUKI	DLN-5410N	00133	06
4	1-NEEDLE LOCKSTITCH BUILT-IN TRIMMING KNIFE MACHINE	JUKI	DLM-5200ND	00248	30
5	2-NEEDLE, 5-THREAD, OVERLOOK MACHINE	KANSAI SPECIAL	MOUK2116H-01H3 X 4	054982	56
6	2-NEEDLE, 5-THREAD, 3-LOOPER OVERLOOK MACHINE	FEIYUE	2100-S	NO SL	01
7	2-NEEDLE, 2-LOPPER 4-THREAD MACHINE	TAIKING		10682	06
8	2-NEEDLE, FEED-OFF-THE ARM DOUBLE CHAIN STITCH MACHINE	JUKI	MS-1190D	01310	17
9	4-NEEDLE, 4-LOOPER DOUBLE CHAIN STITCH MACHINE	KANSHAI SPECIAL	DFB-1400-1-XP	1208708	12
10	2-NEEDLE FEED LOCKSTITCH MACHINE	JUKI	LH - 3528 ASD	11146	15
11	2-NEEDLE DOUBLE CHAIN STITCH MACHINE	JUKI			15
12	3-NEEDLE DOUBLE CHAIN STITCH MACHINE	SIRUBA	L3-8364		06
13	1-NEEDLE, STRAIGHT LOCKSTITCH BUTTONHOLE MACHINE	JUKI	LBH-781U	11024	31
14	COMPUTER CONTROLLED, HIGH SPEED LOCKSTITCH BUTTON SEWING MACHINE	JUKI	LK -1903 ASS-301	121013017	31
15	COMPUTER CONTROLLED, HIGH SPEED LOCKSTITCH BARTKING MACHINE	HIKARI	HK-430D - A	121013017	02
16	STRAIGHT KNIFE CLOTH CUTTING MACHINE	KM MAX	KM KSAUV-10 MAX-700A	NO SL	09
17	BAND KNIFE CLOTH CUTTING MACHINE	EASTMAN KM	EC-700N BK-550	0809501	03
18	ANUAL CUTTER WITH TRACK (36") LIFTER COUNTER	EASTMAN	EC-3	NO SL	03
19	HYDRAULIC CUTTING PRESS MACHINE	LOCAL		NO SL	01
20	CONVEYER TYPE CONTINUOUS TOP FUSING PRESS MACHINE	FIBLON	HY-700 (HB,P-H-700)	060331-00120	01
21	CONVEYER TYPE MINI PRESS (FUSING) MACHINE	HASHI MA OSHI MA	H.P.M-600DA 450NS 450GS 450MS	37 296 307	01 01 01
22	AUTOMATIC SHIRT PLACKET FUSING MACHINE	NGAI SHING	NS-8405-10"	296 307	01 01
23	AUTOMATIC SHIRT BACK YEAK FUSING MACHINE	NGAI SHING	NS-8401		01
24	AUTOMATIC SHIRT SIDE SEAM FUSING MACHINE	NGAI SHING	NS-8402		01



25	AUTOMATIC SHIRT ARM HOLE FUSING MACHINE	NGAI SHING	NS-8403		01
26	AUTOMATIC SLEEVE PLACKET FUSING MACHINE	NGAI SHING	NS-2410-1"		04
	POCKET CREASING MACHINE	NGAI SHING	NS-43	1465	01
27	COLLAR TRIMMING, TURNING AND BLOCKING MACHINE	NGAI SHING	NS-81	992	03
28	AUTOMATIC COLLAR & CUFF PRESS MACHINE	NGAI SHING	NS-8243	134	03
29	AUTOMATIC CUFF BLOCKING MACHINE	NGAI SHING	NS-85	949	03
30	COLLAR CONTOUR TRIMMING MACHINE	NGAI SHING	NS-92	979 (50229)	02
31	THREAD SUCKING MACHINE	LOCAL		NO SL	02
		NGAI SHING	NS-322		14
32	FINISHING IRON TABLE		NS-3502		16
		LOCAL			2
33	INLINE ELECTRICAL VACUUM IRON	SILVER STAR	ES-300		60
		VEIT			
34	STEAM IRON FINISHING	SILVER STAR	AS-1450		32
35	FOLDING TABLE	NGAI SHING	NS-50	5331	12
36	NORMAL FOLDING TABLE	LOCAL		NO SL	20
37	CONVEYER TYPE NEEDLE DETECTOR MACHINE	HASHIMA	HN-750G	002106	02
			HN-700G		
38	CLOTH WINDING INSPECTION MACHINE	NGAI SHING	NS-43	458	01
39	CONE WINDING MACHINE	TSSM BRAND	TS-20F	NO SL	03
40	AUTO STRAPPING MACHINE	NGAI SHING	NS1202	179	01
41	SPOT REMOVING MACHINE	NGAI SHING	NS-3301	303	01
42	BUTTON SNAP PULL TESTER	MAG ENGINERING	MAG-C2201	167084	01
43	COLOR MATCHING CABINET	MAG ENGINERING	MAG-G0201	167083	01
44	ROTA WASH MACHINE		MO-W-10		01
45	SAMSUNG WASH MACHINE		SW-903 FX		01
46	CROCK METER		AATCE		01
47	TENSION TEST KID				02
48	ELECTRONIC BALANCE	AND, KOREA			01
49	SHRINKAGE TEMPLATE				01
50	METAL HAND GLOVES				09
51	VACUUM PUMP	KUM SUNG	KVP-510		01
	AIR COMPRESSOR	HI TACHI BEBICON	3.7P-9.5	596	01
52	CATERPILLAR GAS GENERATOR	CRAMELECTRO S.	MO-3516STIA	4EK01489	01
53				4EK01740	01
54	3.0 KW OCTANE GENERATOR		HH 3500 XL	NO SL	01
55	350 KG GAS FIRED STEAM BOILER	MODERN ERECTION	MB-350WT-G	4196	01
	500 KG GAS FIRED STEAM BOILER	MODERN ERECTION	500TL-086		01
56		MODERN ERECTION	MWS 21	97	01
57	WATER SOFTENER	MODERN ERECTION	AUTO		01
58	BOX INTERLINING CUTTING MACHINE	LOCAL	-	1	01
59	TWENTY HEAD EMBROIDERY MACHINE	TAJIMA JAPAN	TMFXV	-	04
60	ONE HEAD EMBROIDERY MACHINE (MANUAL)	SHONDIP			01
				544.2	
61	NECK PRESS MACHINE	NGAI SHING	NS-8247	538M3	03
				541M.1	
62	LIFT MACHINE	AIR CON. 630 KG & CARGO LIFT			02

FIRE WARNING SYSTEM

1. Smoke & Heat Detector

a. Ground floor	:	73 pcs
b. First Floor	:	49 pcs
c. 2nd Floor	:	49 Pcs
d. 3rd Floor	:	62 Pcs
e. 4th Floor	:	49 Pcs
f. 5th Floor	:	49 Pcs
g. 6th Floor	:	26 Pcs
h. Generator	:	04 Pcs
i. Boiler	:	01 Pcs
j. Compressor	:	01 Pcs
k. Sub-Station	:	01 Pcs
Total	:	364 pcs



2. Manual Call Point (Fire Alarm Switch)

a. Ground floor	:	05 pcs
b. First Floor	:	03 pcs
c. 2nd Floor	:	03 Pcs
d. 3rd Floor	:	03 Pcs
e. 4th Floor	:	03 Pcs
f. 5th Floor	:	03 Pcs
g. 6th Floor	:	03 Pcs
h. Generator	:	01 Pcs
i. Boiler	:	01 Pcs
j. Compressor	:	01 Pcs
k. Sub-Station	:	01 Pcs
Total	:	27 pcs





4. Fire Bell

a. Ground floor	:	05 pcs
b. First Floor	:	03 pcs
c. 2nd Floor	:	03 Pcs
d. 3rd Floor	:	03 Pcs
e. 4th Floor	:	03 Pcs
f. 5th Floor	:	03 Pcs
g. 6th Floor	:	03 Pcs
h. Generator	:	01 Pcs
i. Boiler	:	01 Pcs
j. Compressor	:	01 Pcs
k. Sub-Station	:	01 Pcs
Total	:	27 pcs



5. Gong Bell

a. Ground floor	:	03 pcs
b. First Floor	:	03 pcs
c. 2nd Floor	:	03 Pcs
d. 3rd Floor	:	03 Pcs
e. 4th Floor	:	03 Pcs
f. 5th Floor	:	03 Pcs
Total	:	18 pcs





6. Emergency Light

a. Ground floor	:	31 pcs
b. First Floor	:	20 pcs
c. 2nd Floor	:	20 Pcs
d. 3rd Floor	:	38 Pcs
e. 4th Floor	:	20 Pcs
f. 5th Floor	:	23 Pcs
g. Generator	:	02 Pcs
h. Boiler	:	01 Pcs
i. Compressor	:	01 Pcs
Total	:	156 pcs



7. Exit Light

a. Ground floor	:	22 pcs
b. First Floor	:	06 pcs
c. 2nd Floor	:	06 Pcs
d. 3rd Floor	:	18 Pcs
e. 4th Floor	:	06 Pcs
f. 5th Floor	:	12 Pcs
g. 6th Floor	:	02 Pcs
h. Generator	:	01 Pcs
i. Boiler	:	01 Pcs
Total	:	74 pcs





FIRE SAFETY

Fire Door

a. Ground floor	:	04 Pcs
b. Bonded Ware House (Ground Floor)	:	02 Pcs
c. First Floor	:	04 Pcs
d. Spot removing Room (First Floor)	:	01 Pcs
e. 2nd Floor	:	04 Pcs
f. Spot removing Room (2nd Floor)	:	01 Pcs
g. Chemical Room (2nd Floor)	:	01 Pcs
h. 3rd Floor	:	04 Pcs
i. Bonded Ware House (3rd Floor)	:	02 Pcs
j. Accessories Store (3rd Floor)	:	02 Pcs
k. 4th Floor	:	04 Pcs
l. Spot removing Room (4th Floor)	:	01 Pcs
m. 5th Floor	:	04 Pcs
n. Finished Goods Store (5th Floor)	:	02 Pcs
o. 6th Floor	:	02 Pcs
p. Generator Room	:	01 Pcs
q. Boiler Room	:	01 Pcs
r. Sub-Station Room	:	01 Pcs
Total	:	41 Pcs





Fire Hydrant



Industrial Grade Emergency Light





FIRE EXTINGUISHER

1.	Ground Floor		
	a. Wall Mounted		
	ABC Type	:	22 pcs
	CO2 Type	:	11 pcs
	b. Automatic Dry Powder		
	ABC Type	:	03 pcs
2.	First Floor		
	a. Wall Mounted		
	ABC Type	:	22 pcs
	CO2 Type	:	11 pcs
	b. Portable Type		
	ABC Type	:	01 pcs
3.	2nd Floor		
	a. Wall Mounted		
	ABC Type	:	22 pcs
	CO2 Type	:	11 pcs
4.	3rd Floor		
	a. Wall Mounted		
	ABC Type	:	20 pcs
	CO2 Type	:	13 pcs
	b. Automatic Dry Powder		
	ABC Type	:	02 pcs
6.	4th Floor		
	a. Wall Mounted		
	ABC Type	:	21 pcs
	CO2 Type	:	12 pcs
7.	5th Floor (including Dining & Canteen)		
	a. Wall Mounted		
	ABC Type	:	25 pcs
	CO2 Type	:	08 pcs
8.	6th Floor		
	a. Wall Mounted		
	ABC Type	:	01 pcs
	CO2 Type	:	01 pcs
9.	Generator Room		
	a. Wall Mounted		
	Foam Type	:	02 pcs
	CO2 Type	:	03 pcs
	ABC Type	:	03 Pcs
10.	Boiler Room		
	a. Wall Mounted		
	ABC Type	:	01 Pcs



	b. Portable Type		
	CO2 Type	:	01 Pcs
11.	Compressor Room		
	a. Wall Mounted		
	ABC Type	:	01 Pcs
	CO2 Type	:	01 Pcs
12.	Sub-Station Room		
	a. Wall Mounted		
	ABC Type	:	01 Pcs
	b. Portable Type		
	CO2 Type	:	01 Pcs
13.	Wastage Room		
	a. Wall Mounted		
	ABC Type	:	02 Pcs
Total			
	a. Wall Mounted		
	ABC Type	:	141 pcs
	CO2 Type	:	71 pcs
	Foam Type	:	02 pcs
	b. Portable Type		
	ABC Type	:	01 pcs
	CO2 Type	:	03 pcs
	c. Automatic Dry Powder	:	05 Pcs





FIRE FIGHTING EQUIPMENT

The following fire fighting equipments are kept in different locations to attain any adversary situation:

SL No	Type of Fire Fighting Equipment	Gr. Floor	1st Floor	2nd Floor	3rd Floor	4th Floor	5th Floor	6th Floor	Total
1	Fire Hydrant Box	3	3	3	3	3	3	3	21
2	Fire Bucket with Stand	8	8	8	8	8	8	0	48
3	Lock Cutter	2	1	1	1	1	1	0	7
4	Belcha	2	1	1	1	1	1	0	7
5	Fire Hook	3	2	2	2	2	2	0	13
6	Fire Bitter	3	2	2	2	2	2	0	13
7	Fire Axe	2	1	1	1	1	1	0	7
8	Helmet	4	4	4	4	4	4	0	24
9	Gas Mask	4	4	7	4	10	7	0	35
10	Hand Gloves (Asbestos)	8	8	8	8	8	8	0	48
11	Fire Blanket	2	2	2	2	2	2	0	12
12	Stretcher	1	1	1	1	1	1	0	6
13	Fire Equipment Box	3	2	2	2	2	2	0	13
14	Fire Water Drum	2	2	2	2	2	2	0	8
15	Torch Light	1	1	1	1	1	1	1	7



MEDICAL FACILITIES

We are providing the following medical facilities:

1. Free medical facilities are given to all employees during the working hour at our Medical Inspection Room.
2. Each worker is provided with the medical Allowance @ 250.00 Taka per month.
3. First Aid Boxes with trained First Aiders are available at each section.
4. Accident Register is maintained for each incident and month wise Accident Analysis Report is maintained.



5. Each floor has been provided with the following numbers of First Aid Box:

a. Ground floor	:	03 pcs
b. First Floor	:	04 pcs
c. 2nd Floor	:	04 Pcs
d. 3rd Floor	:	02 Pcs
e. 4th Floor	:	04 Pcs
f. 5th Floor	:	02 Pcs
Total	:	19 Pcs





6. The following medicines & medical items are available in the first aid box:
- | | |
|------------------|------------------|
| 1. Orsaline | 10. Hexisol |
| 2. Nix | 11. Band Aid |
| 3. Savlon | 12. Savlon Cream |
| 4. Burnol | 13. Hands Gloves |
| 5. Cotton | 14. Zumbak |
| 6. Crape Bandage | 15. Micropore |
| 7. Nebanol | 16. Povisep |
| 8. Scissor | 17. Neostrip |
| 9. Bandage | |



FACILITIES

Child Care Room



Dining Hall





CONCLUSION

To achieve any goal, one must set a definite aim. Eve Dress-Shirts' Ltd is committed to maintain the highest possible standard of product safety, quality, timely delivery and compliance of the law of the lands and other international laws. The nature of production in the Ready Made Garments (RMG) industry is a Team Work. From the inception of Eve Dress-Shirts' Ltd, we are working as team to achieve our goal.